

# Coatings Overview

The quality and durability of spectacle lenses is very much affected by the quality of the coating, this is why Hoya has always invested heavily in the development of quality anti-reflection coatings and retains a leading position as a manufacturer in the coating market.



**UV Control** is a coating which has an innovative double sided approach, filtering harmful UV light from the front and neutralising reflected UV from the back of the lens.

**Now includes a no quibble guarantee.**



**BlueControl** is a coating that neutralises the blue light emitted by digital screens, reducing eye fatigue, eye strain and sleeplessness. Benefits include the reduction of glare and enhanced contrast.

**Now includes a no quibble guarantee.**



**High-Vision LongLife** is the hardest, most durable anti-reflection coating available from Hoya today. 50% more scratch resistant than Super Hi-Vision.

**Now includes a no quibble guarantee.**



**Super Hi-Vision**, known for its high scratch resistance, is practically as hard as glass lenses which minimises the risk of scratches and prevents the coating from peeling.



**Hi-Vision Aqua** is a high-quality stable coating with a water repellent top layer. It comes as standard with a hard coat layer, reducing the risk of annoying scratches.



## OTHER COATINGS AVAILABLE

### Concave anti-reflection

Coating the back surface of a lens with an anti-reflection coating can help to reduce the reflections of light that enter from behind you and bounce off the concave surface into your eyes, ideal for use on tinted lenses.

### UV Block

UV protection for patients' eyes is highly recommended. UV protection is inherent on all Hoya lens materials apart from 1.50, on which we recommend the addition of a UV block. Hoya is able to supply both UV 385 and UV 400 on 1.50 products. (see catalogue product pages for further information)

UV 400 protects against 99% to 100% of UVA & UVB ultraviolet radiation. It is called UV 400 because it blocks all rays of light up to a wavelength of 400 nanometers. UV 400 has a higher level of protection than the European standard requires which allows up to 5% UV transmittance through sunglasses.

### Hard Coat

Ensures better resistance against scratches and guarantees the lenses keep their optical qualities for longer.



## Photochromic Lenses

### SENSITY

LIGHT REACTIVE LENSES

Hoya Sensity is the latest innovation in photochromic lenses that provides unparalleled performance and outstanding user comfort.

- Stabilight Technology™ ensures consistent performance in different climates and seasons
- Excellent contrast and glare reduction with Sensity's deep, natural colours
- Exceptional optical quality and durability due to Photochromic Precision Technology
- Widest Free Form product range in progressive, single vision and bifocal.



Emerald Green



Bronze Brown



Silver Grey

### SENSITY

DARK

LIGHT REACTIVE LENSES

Sensity Dark: the next step in light reactive lenses. This product innovation of the Sensity family stands out with extra performance.

Sensity Dark lenses deliver extra darkness in the open air and even behind the car window, offering the performance your patients require in their outdoor activities. Indoors they quickly fade back again to exceptionally clear lenses.



Emerald Green



Bronze Brown



Silver Grey

### SENSITY

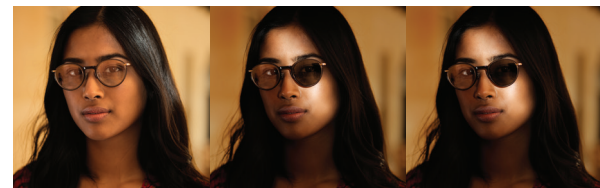
SHINE

LIGHT REACTIVE LENSES

Make your move towards Sensity Shine: the next step in light reactive lenses.

This product innovation of the Sensity family stands out with extra style.

Sensity Shine lenses give your patients an exclusive look thanks to a mirror coating that is more intense in the light yet subtle when indoors. Sensity Shine lenses also deliver extra darkness when outdoors.



Sensity Shine Emerald Green  
- light mirror blue



Sensity Shine Bronze Brown  
- light mirror copper



Sensity Shine Silver Grey  
- light mirror silver

# Mirror and Sun Lenses



## Special Sphere: A new perspective on performance

Function and fashion go hand in hand with Special Sphere, Hoya's range of contrast-enhancing tints. Fine details remain clearly visible when light conditions are far from optimal.

- High contrast vision in all weather conditions
- Suitable for the most diverse activities
- Ample choice for fashion-conscious patients

Available in indices 1.67, 1.60, 1.53, 1.50

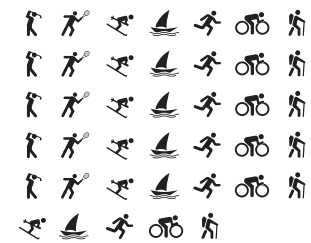
### SPECIAL SPHERE

- Green
- Orange
- Yellow
- Copper
- Brown
- Purple

### WEATHER CONDITION



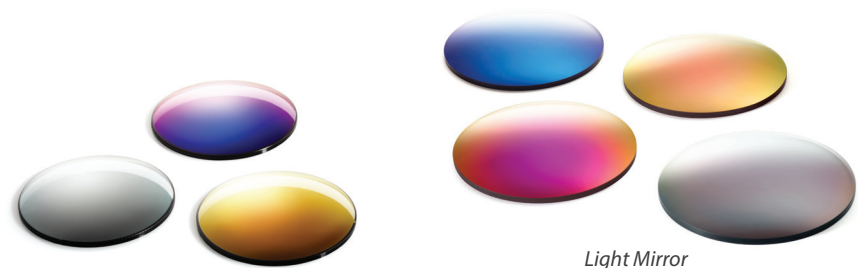
### SPORTS INDICATION



## Mirror: Reflect your style

Appearance is everything! In line with the latest fashion trends, Hoya offers a mirror coating in three eyecatching colour variations: gold, silver and blue. Together with the new Light Mirror tints, the range now consists of 7 mirror colours. The coating creates a radiant, edgy style, which is sure to appeal to your patients' fashion sense... and reflects yours!

Hoya Mirror is available across all designs and comes with a concave anti-reflection coating.



Mirror

Light Mirror

For availability see the Appendix or catalogue product pages.